



BTSMARIN

Our Journey in the Shipbuilding Industry

Having established in 2014 in Tuzla-Istanbul / Turkey, which is described as the locomotive region of Turkey in the field of the shipbuilding industry, **BTS Marin** has managed to make a name for itself in the industry pretty quickly through its transparent and solution-oriented communication.

BTS Marin has received the partnership and sales authorization of **CMC Marine Stabilizers & Thruster**, **Calistri Giacinto**, **Xenta Systems**, **SteelHead Marine**, **SpaceAge**, **PropGlide**, and **Watchit** products in the region. With its determined service areas, namely Turkey and the Eastern Mediterranean, BTS Marin has attracted global brands to its service area and brought the global and the local together.

BTS MARIN takes pride in offering reliable and high-quality services onto marine enthusiasts. Our customer-centric approach ensures your satisfaction and guarantees a trustworthy maritime experience every time.



Project Management Partner

BTS Marin carries out the complete collection of data and follow-up of the manufacturing process, transportation, import, delivery, installation, pre-start, and commissioning processes.

- Project Management:
- Engineering
- Distributorships
- Service and Equipment Installation
- After Sales Technical Maintenance



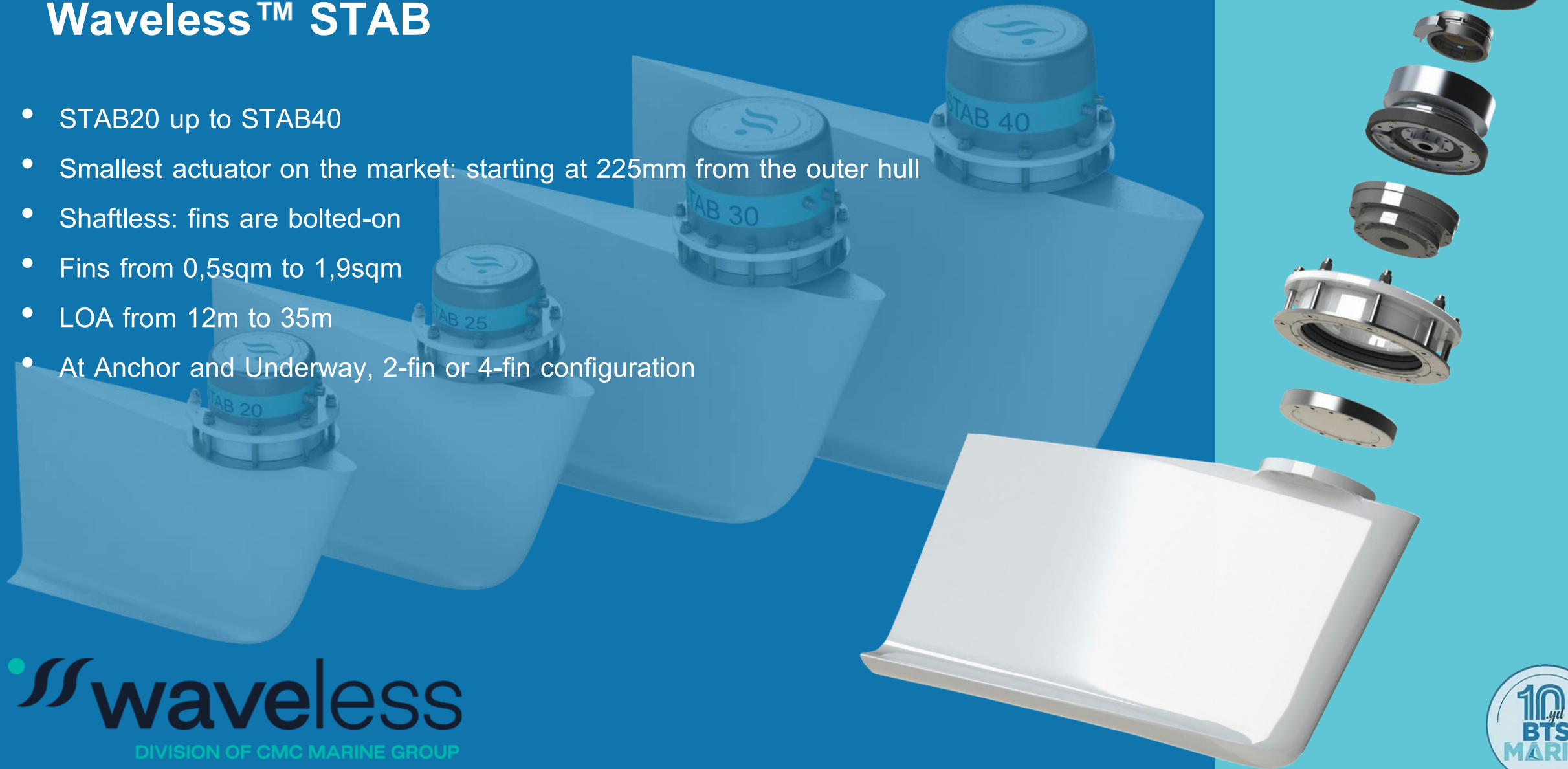
Our Partners



WAVELESS Fin Stabilizers

Waveless™ STAB

- STAB20 up to STAB40
- Smallest actuator on the market: starting at 225mm from the outer hull
- Shaftless: fins are bolted-on
- Fins from 0,5sqm to 1,9sqm
- LOA from 12m to 35m
- At Anchor and Underway, 2-fin or 4-fin configuration



CMC MARINE Fin Stabilizers

At Anchor and Underway, 2-fin or 4-fin configuration

Stabilis Electra™ HS

- Fin profile optimized for planing hulls
- Blue body
- Fins: from 0,8sqm to 4sqm
- LOA: from 20m to 60m

Stabilis Electra™ LR

- Fin profile optimized for displacement and semi-displacement hulls
- Shorter span and double end-plate
- Modified geometry of mechanics
- Black body
- Fins: from 1,5sqm to 4sqm
- LOA: from 30m to 70m



CMC MARINE Thrusters

- Dualis Electra™
- Dualis Hydro™
- AC-driven: from 18kW (280kgf) to 195kW (3150kgf)
- Hydraulically-driven: from 20kW (300kgf) to 52kW (830kgf)
- Naval-grade materials and components

CMC MARINE Steering System

- Directa™
- 100% electrical system
- AC-driven, independent rudders, high redundancy
- Torque: from 4kNm to 16kNm
- Integration with any autopilot or joystick system
- Type-approval, compliant with CE, Rina, ABS, LR



FITLOCK® Furniture Solutions

- Modular
- Perfectly levelable
- Acoustic and thermal insulation pad
- It reduces vibrations
- Variable and adjustable thickness
- Light and robust



FITLOCK
FIT YOUR NEEDS, GET OUR SYSTEM

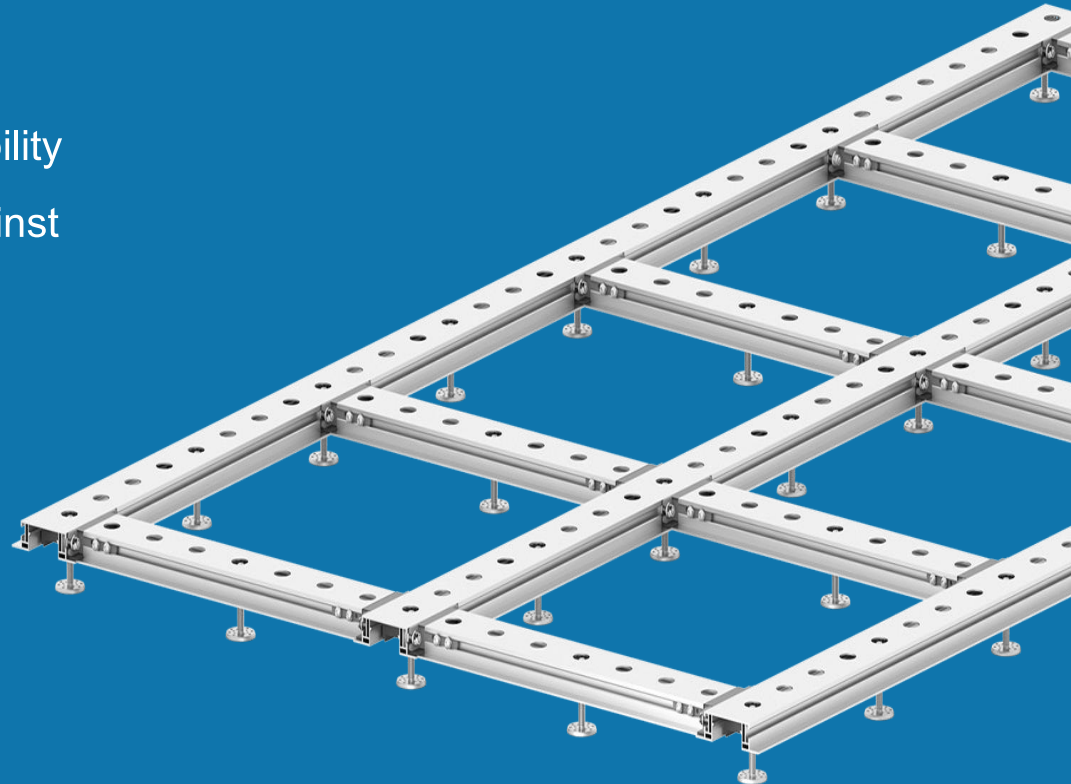


FITLOCK® Furniture Solutions

Fitfgrid® Modular Walls & Ceilings Gratings

Fitfloor® Modular Floating Floor

- Aluminum profiles and transoms, gaskets, and dampers
- High stability of the structure.
- Good decoupling
- Reduced noise and structural mobility
- Insulating the flooring surface against vibrations from the lower surface
- Light and robust
- Fitfloor® Exclusive leveling
27 - 100 mm after assembly



FITLOCK
FIT YOUR NEEDS, GET OUR SYSTEM



PropGlide®

Propeller & Running Gear Coating

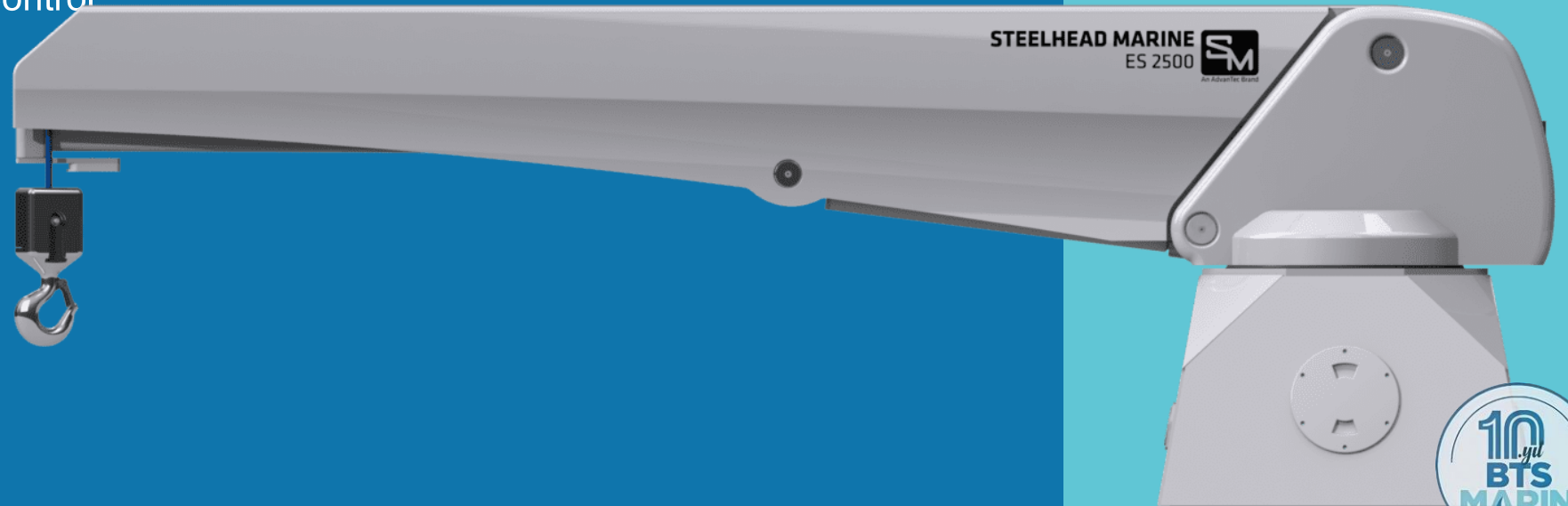
- Ease of Application
- Biocide-Free and Environmentally Friendly
- Improved Fuel Efficiency
- Clean propellers for extended periods of time
- Keeps your propellers clean from marine growth
- Increase in Prop Speed Means a Faster Vessel
- Available Kits: Medium Kit 625ML, Large Kit 1250ML
- Kits Include:
Primer Base, Primer Hardener, Clear Topcoat



Steelhead Marine Hydraulic Cranes

- Superior engineering and advanced materials
- Greater lift capacity with less crane weight
- Durability, strength and reliability
- Compact and attractive design that puts less space and weight demands on your yacht
- High strength, lightweight materials
- Easy to operate with Remote Control
- Whisper quiet operation
- Exceptional value
- Reliable
- Capacity: 364 Kg to 2772 Kg

 **STEELHEAD
MARINE**
An AdvanTec Brand



Xenta Systems

X-DOCK Integrated Control Systems

- **X-DOCK** Allows you to execute complex maneuvers simply and with exceptional precision.
- Even in the most challenging mooring conditions i.e. tight spaces, high winds or strong currents, the X-DOCK superior efficiency is clear, making even tricky, awkward maneuvers feel safe and straightforward.
- The X-DOCK makes a system available to everyone – owners and captains alike – that lets them concentrate on maneuvering without having to think about simultaneously controlling propulsion and thrusters.
- The X-DOCK is the best way to enhance anybody's ability to control a craft – dependent on its characteristics and how evolved they are.



Xenta Systems

X-POWER Integrated Control Systems

- **X-POWER** The perfect marriage of a robust, ergonomic design and a user-friendly control system. The result is superior comfort combined with much easier, safer steering, and astonishing control of your boat's power. The X-POWER offers a unique experience: a feeling of complete mastery of the vessel. The system delivers easy maneuvering with smooth gear-shifting. This translates into improved control in all contexts, regardless of engine and propulsion type.
- The X-POWER with Syncro mode synchronizes engine revs even if the levers are slightly misaligned. Furthermore, activating the Single Lever mode allows the engines to be controlled using a single lever, enhancing the seafaring experience still further.



Xenta Systems

X-DP Integrated Control Systems

- **X-DP** The perfect way of maintaining your boat's position without dropping anchor, be it when you are preparing to moor or waiting to refuel or for a bridge to raise, etc.
- Once activated the system automatically holds your boat's position – even in windy conditions or strong currents. The X-DP System uses GPS data and a Compass integrated with a gyroscopic platform to hold both the craft's position and bow direction. A sophisticated algorithm, developed by XENTA's engineers, turns these data into commands which are then transmitted to the propulsion and control systems.
- The system also allows the boat's position or bow direction to be changed in complete safety. To activate the X-DP, simply press a combination of buttons on the X-DOCK System.



Xenta Systems

X-RC Integrated Control Systems

- **X-RC** The perfect way of remotely maneuvering your boat in complete safety. This wireless device offers users absolute mooring confidence in all conditions.
- The X-RC System allows the boat to be maneuvered freely from either stern or bow. Using just this one wireless device, you can control your starboard engine, port engine and the stern drive if there is one. It also makes anchoring much simpler too as the X-RC can also be used to down or hoist anchor from any point aboard.
- An innovative, technologically-advanced system that guarantees superb reliability and simplicity of use. Entering and leaving port or negotiating tight waters are just a few of the tricky situations helmsmen encounter. But with the X-RC you will always have an invaluable ally to count on to ensure you make the best of every situation.



WATCHIT

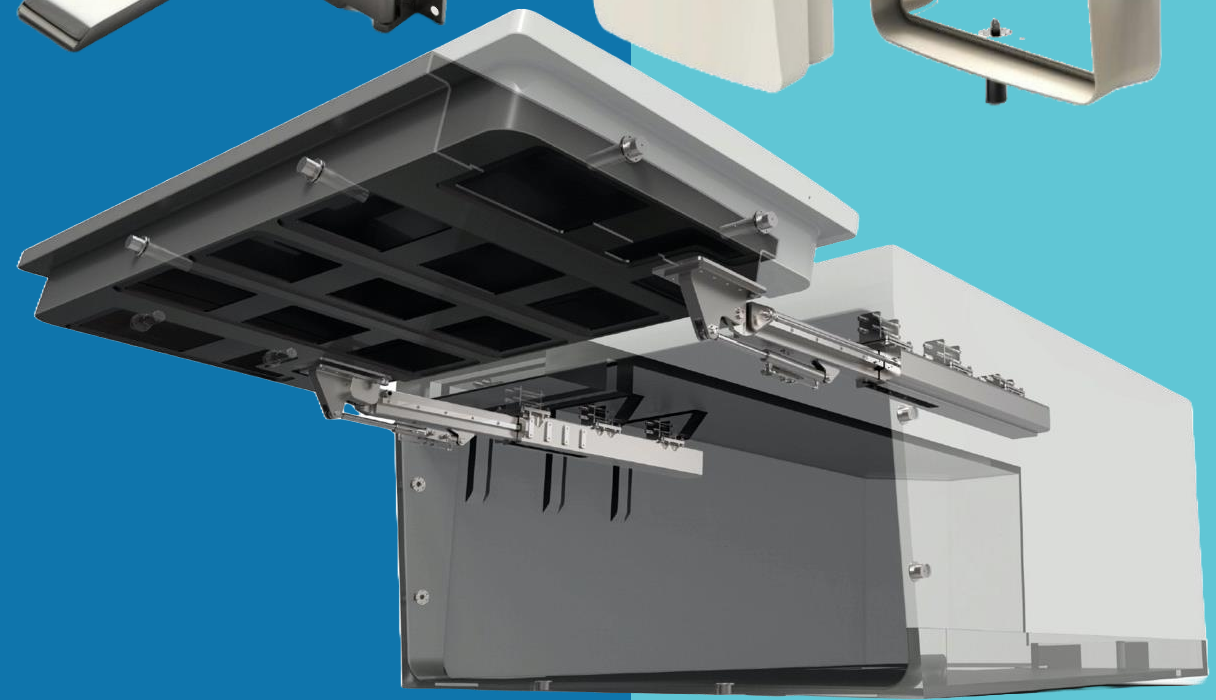
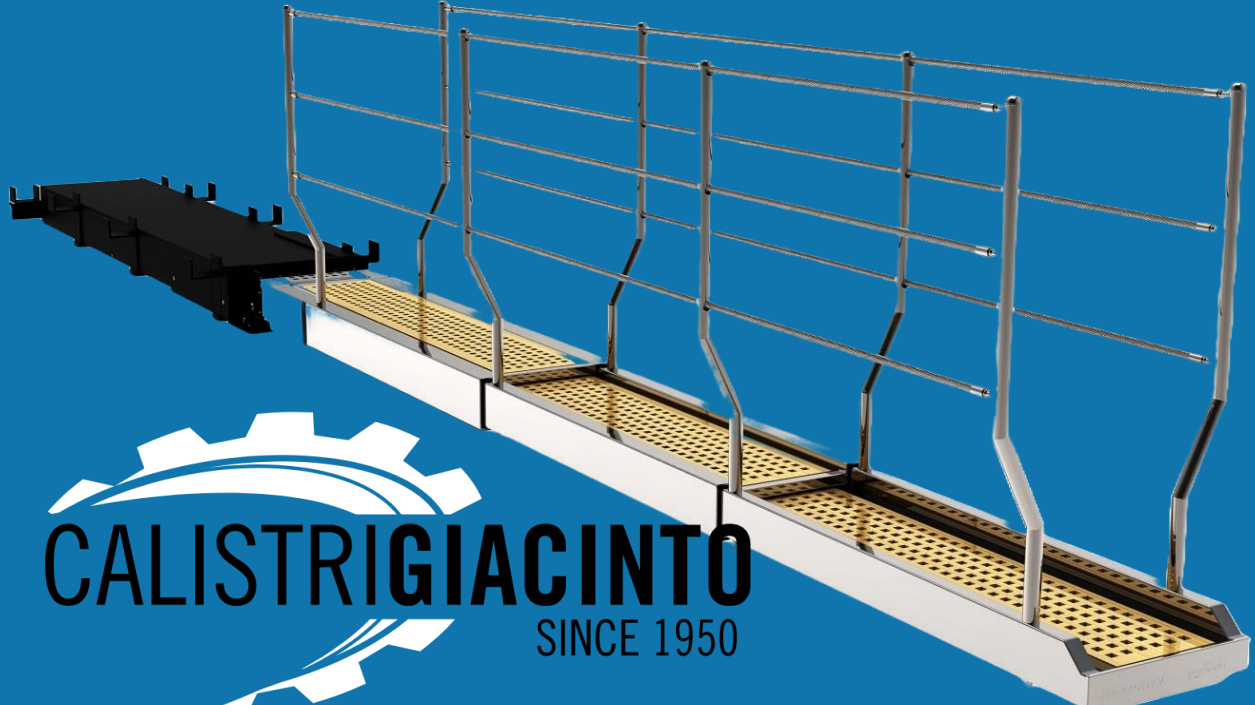
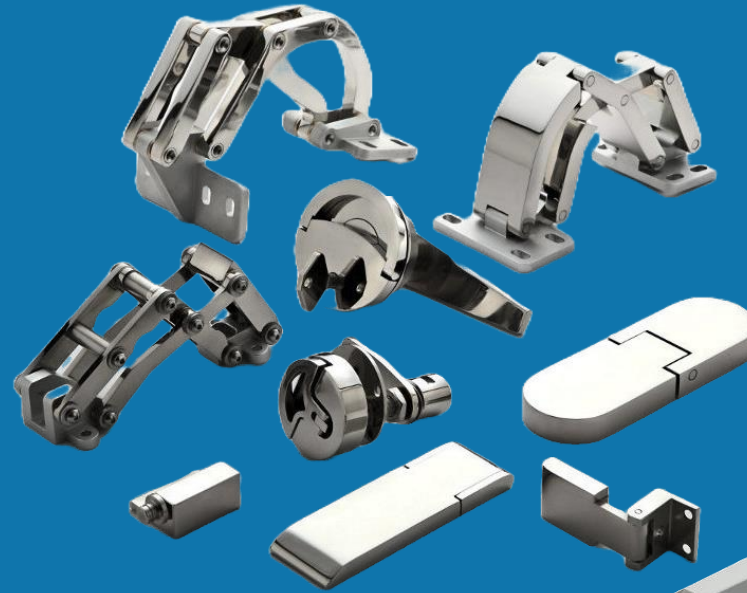
Smart Collision Prevention System

- **AREA RISK ASSESSMENT SCANNING MODULE** Actively scans the immediate navigational area, assessing potential risks by correlating real time sensor information with the specific properties of the vessel.
- **VESSEL PROTECTION ANALYTICS** The system continuously analyzes the boat's real-time data streams to ensure ongoing protection and immediate responses to any changes in vessel dynamics or the surrounding environment.
- **DYNAMIC ALERT ZONE ALGORITHM** This module aids vessel safety by effectively distinguishing between genuine threats and negligible anomalies, reducing false alarms
- **IMMEDIATE ACTION NOTIFICATION SYSTEM** In the event of a detected hazard, the system issues real-time alerts, coupled with automated or suggested maneuvers, to facilitate immediate corrective action.



CALISTRI GIACINTO

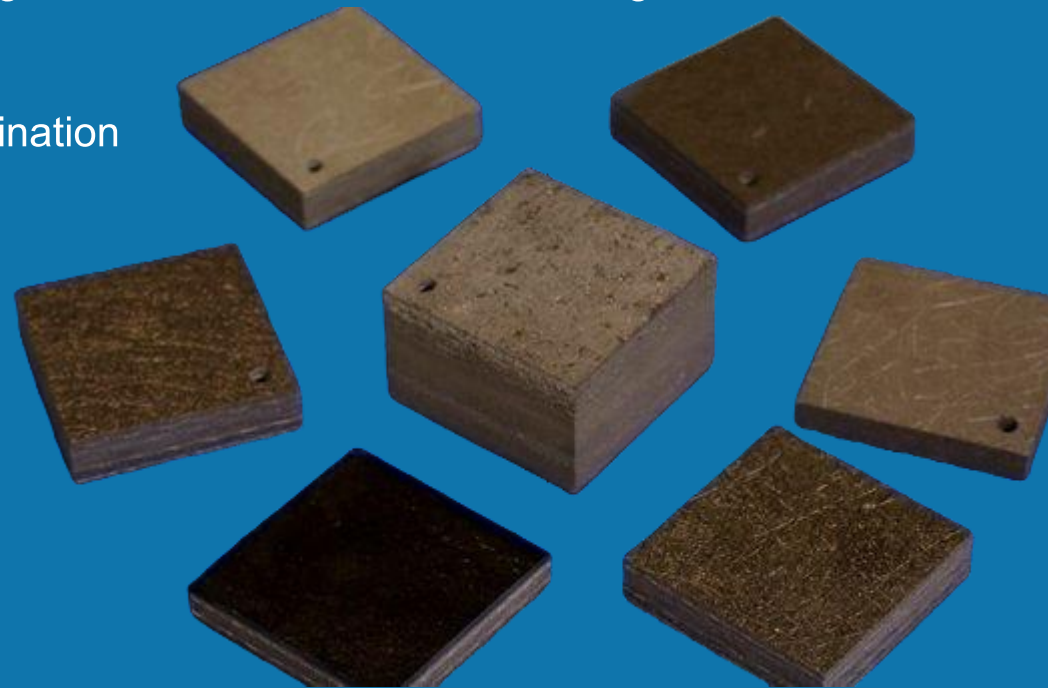
- Watertight Fire Doors and Hatches
- Watertight Doors and Hatches
- Weathertight Hatches
- Stainless Steel Marine Accessories
- Gangways
- Garage Handling Systems



SpaceAge Synthetics

Thermo-Lite Board®

- Tough and light weight composite
- Light weight Composite Product
- No. 1 alternative product to plywood and other wood-based products
- Guaranteed Non-Absorbent
- Durable and reliable high impact strength - does not harbor mold or fungus
- Product Strength
- Thermal insulation resistant to contamination
- Fiberglass Reinforced



- Non-Absorbent
- Rot Free
- Durable
- Dimensionally Stable
- Provides Good Bonding Surface
- Impact Strength
- Sound Insulation
- Thermal Insulation
- Resistant to Contamination
- Wide Temperature Range Use
- Self Extinguishing when heat source is removed



Equipment Installation

BTS Marin offers and implements solutions with its expert staff to install the products you purchase or to realize the service you need in line with your request.

According product you prefer, periodic maintenance of products are supplied by BTS Marin Technical Team.

- CMC MARINE Stabilizers and Thrusters mechanic and electric installation
- CMC MARINE Stabilizers and Thrusters hull strength improvements & periodic maintenance
- Steelhead Marine Crane Installation & periodic maintenance
- Watchit Collusion Prevention Systems Installation
- PropGlide coating application
- Shaft, propeller, rudder blade disassembling and reassembling for class surveys



Technical Service & Maintenance

As the authorized service provider for **CMC Marine Stabilizers & Thruster**, **Calistri Giacinto**, **Xenta Systems**, **SteelHead Marine**, **SpaceAge**, **PropGlide**, and **Watchit** products in Turkey, we take pride in offering reliable and high-quality services to marine enthusiasts.

Our expert technical team provides on-site repair and maintenance services using guaranteed original spare parts for numerous boats and yachts, both domestically and internationally. Our customer-centric approach ensures a trustworthy maritime experience for you.

- Original Spare Parts
- Manufacturer Guaranteed
- Periodic Maintenance
- On-Site Repair & Maintenance



World-Class Reference List



COMPOSITE HULLS

- Sanlorenzo entire fleet
- Azimut Grande entire fleet
- Benetti entire fleet
- Overmarine Mangusta
- Monte Carlo Yachts
- Arcadia
- Miora Fipa,
- Sunseeker
- Gulf Craft
- Numarine
- Marlow Yachts
- Sarp Yachts
- Vtur
- Yildiz
- Holterman
- Isa yachts

STEEL/ALUMINIUM HULLS

- Rossinavi
- Benetti
- Cantiere delle Marche
- Overmarine Gran sport
- Baglietto & Cerri CN group
- NCA SeaGroup (Tecnomar|Admiral)
- Codecasa
- Tansu Turkey
- Numarine
- Moonen
- Liaoning JinLong
- Rosetti Marino
- Palumbo yacht
- Conrad
- Tankoa
- Venture
- Bering yachts
- Heesen

Contact US

For any inquiries, please contact us via:

btsmarinsales@btsmarin.com.tr



Umut Yalaz

Brand Manager

After Sales & Technical Maintenance

+90 542 282 8397

umut@btsmarin.com.tr


Ümit Gazivekili

Business Development Engineer

After Sales & Technical Maintenance

+90 542 282 8323

umit.gazivekili@btsmarin.com.tr

 **+90 216 394 92 94**

 bilgi@btsmarin.com.tr

 <https://btsmarin.com.tr/>

BTS MARIN DENİZCİLİK SAN. TİC. LTD. ŞTİ.

 **Evliya Çelebi, Sahil Blv, No 6-2A, Blok 22. Bina No: 6A, Kat 2, Daire No:18 Tuzla İstanbul / TÜRKİYE**